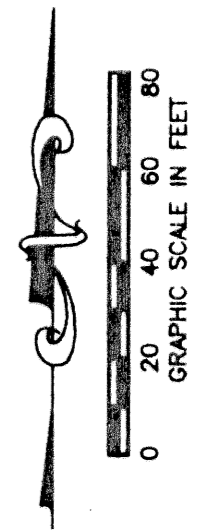


MIRASOL PARCEL TWENTY-FOUR

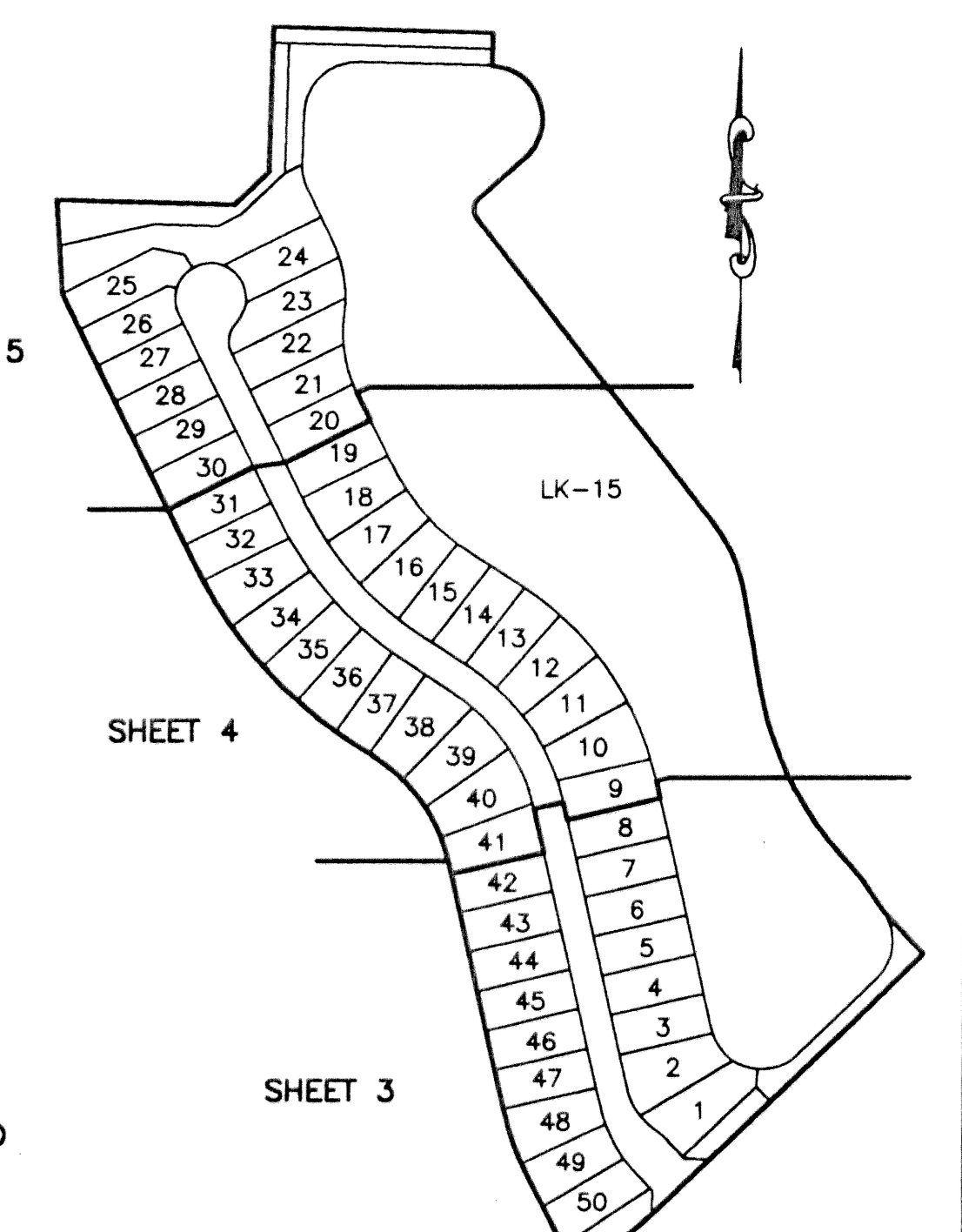
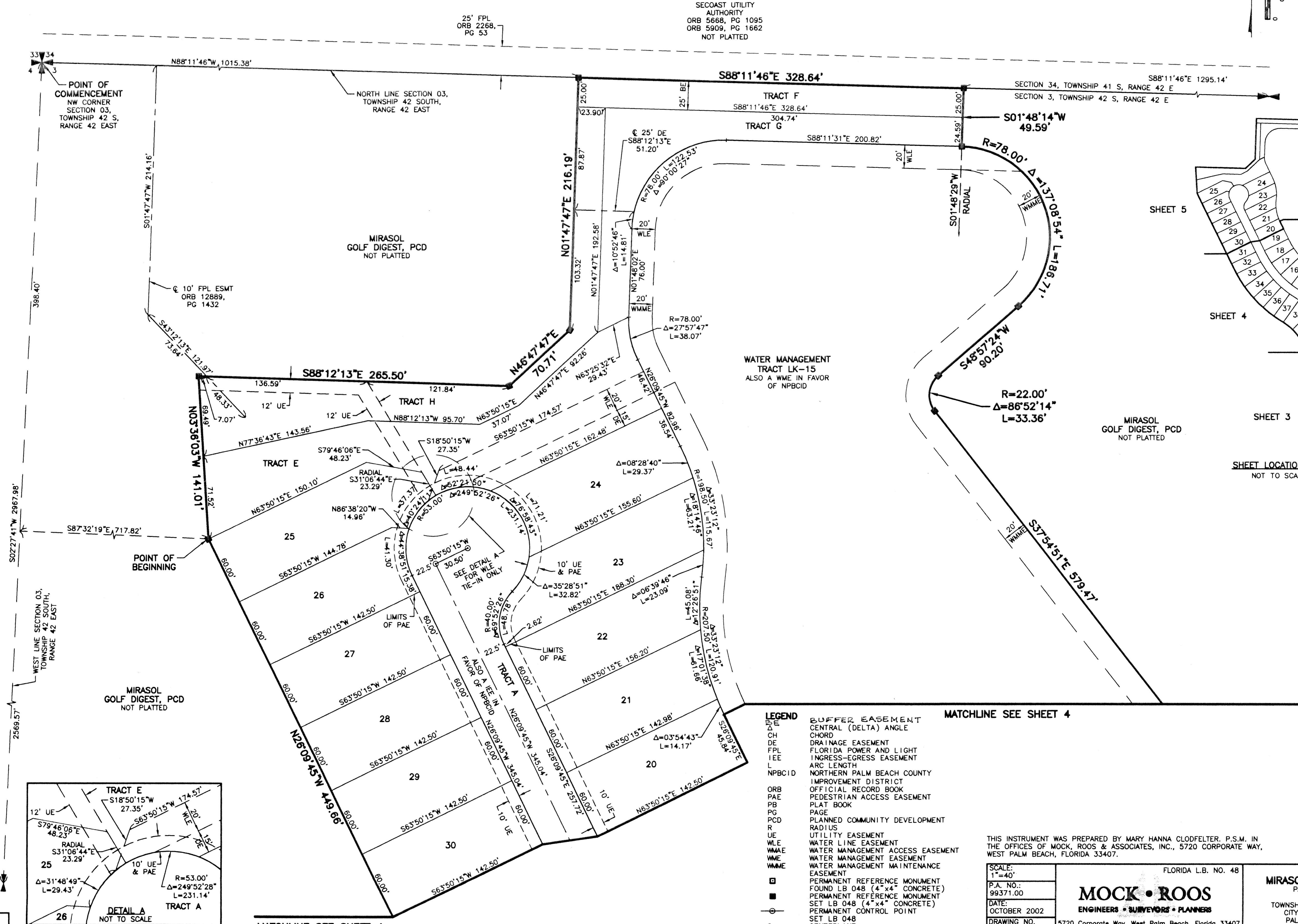
PART OF GOLF DIGEST P.C.D.
BEING IN SECTION 03, TOWNSHIP 42 SOUTH, RANGE 42 EAST,
CITY OF PALM BEACH GARDENS,
PALM BEACH COUNTY, FLORIDA
SHEET 5 OF 5

119

STATE OF FLORIDA
COUNTY OF PALM BEACH
THIS PLAT WAS FILED FOR
RECORD _____
THIS _____ DAY OF _____
AD, 2003 AND DULY RECORDED
IN PLAT BOOK _____ ON PAGES
_____ THROUGH _____
DOROTHY H. WILKEN, CLERK
BY: _____, D.C.



CIRCUIT COURT SEAL



LEGEND

| | |
|--------|---|
| Δ | BUFFER EASEMENT |
| CH | CENTRAL (DELTA) ANGLE |
| CH | CHORD |
| DE | DRAINAGE EASEMENT |
| FPL | FLORIDA POWER AND LIGHT |
| IEE | INGRESS-EGRESS EASEMENT |
| L | ARC LENGTH |
| NPBCID | NORTHERN PALM BEACH COUNTY IMPROVEMENT DISTRICT |
| ORB | OFFICIAL RECORD BOOK |
| PAE | PEDESTRIAN ACCESS EASEMENT |
| PB | PLAT BOOK |
| PG | PAGE |
| PCD | PLANNED COMMUNITY DEVELOPMENT |
| R | RADIUS |
| UE | UTILITY EASEMENT |
| WLE | WATER LINE EASEMENT |
| WMAE | WATER MANAGEMENT ACCESS EASEMENT |
| WME | WATER MANAGEMENT EASEMENT |
| WME | WATER MANAGEMENT MAINTENANCE EASEMENT |
| □ | PERMANENT REFERENCE MONUMENT |
| ■ | FOUND LB 048 (4" x 4" CONCRETE) |
| ○ | PERMANENT REFERENCE MONUMENT |
| ○ | SET LB 048 (4" x 4" CONCRETE) |
| ○ | PERMANENT CONTROL POINT |
| ○ | SET LB 048 |
| ⊙ | CENTERLINE |

MATCHLINE SEE SHEET 4

THIS INSTRUMENT WAS PREPARED BY MARY HANNA CLODFELTER, P.S.M. IN THE OFFICES OF MOCK, ROOS & ASSOCIATES, INC., 5720 CORPORATE WAY, WEST PALM BEACH, FLORIDA 33407.

SCALE: 1"=40'

P.A. NO.: 99371.00

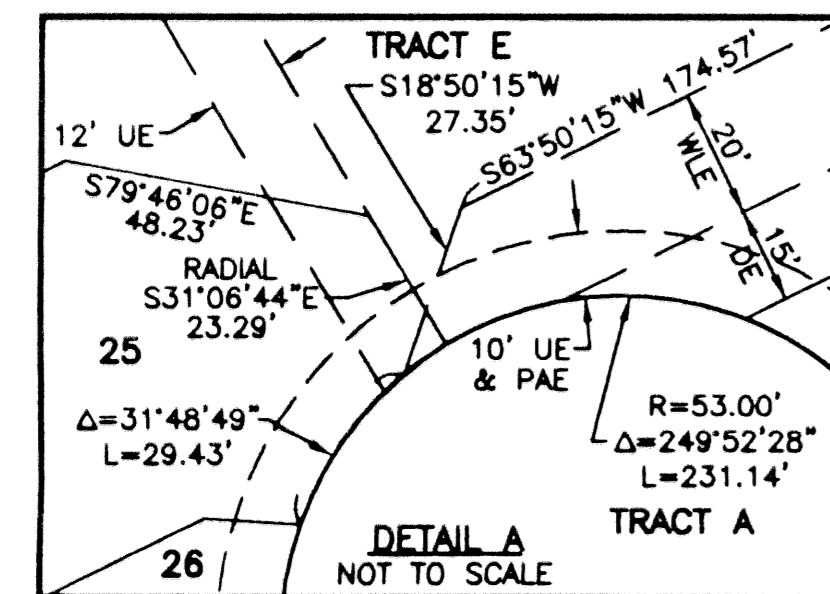
DATE: OCTOBER 2002

DRAWING NO. 42-42-03-93

FLORIDA L.B. NO. 48

MOCK • ROOS
ENGINEERS • SURVEYORS • PLANNERS

5720 Corporate Way, West Palm Beach, Florida 33407
(561) 683-3113, fax 478-7248



S:\v\l\toyipa24.dwg,pa24rpo2.dwg 2/10/2003 1:28:04 PM EST

REV: 02-10-03
CAD FILE: TAYLPA24\PA24RP02